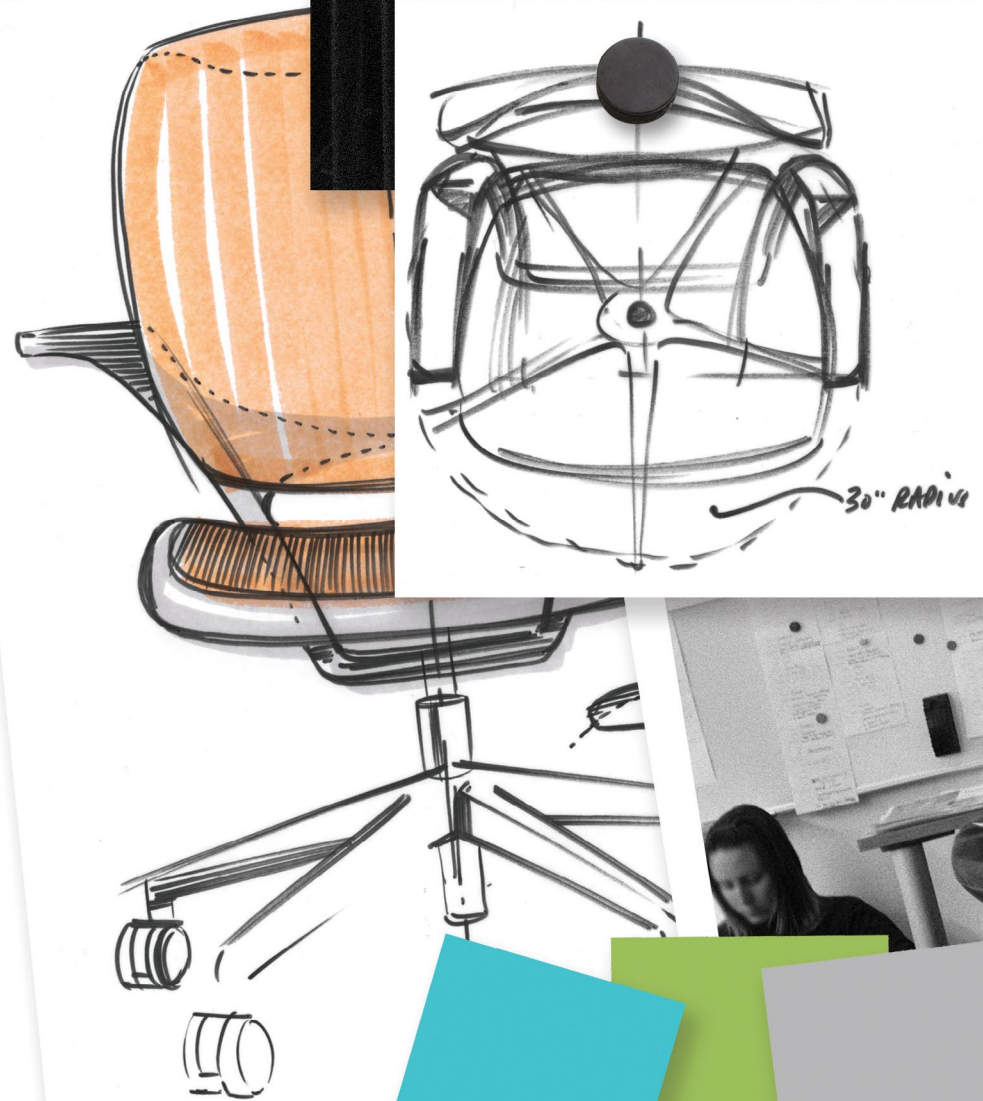
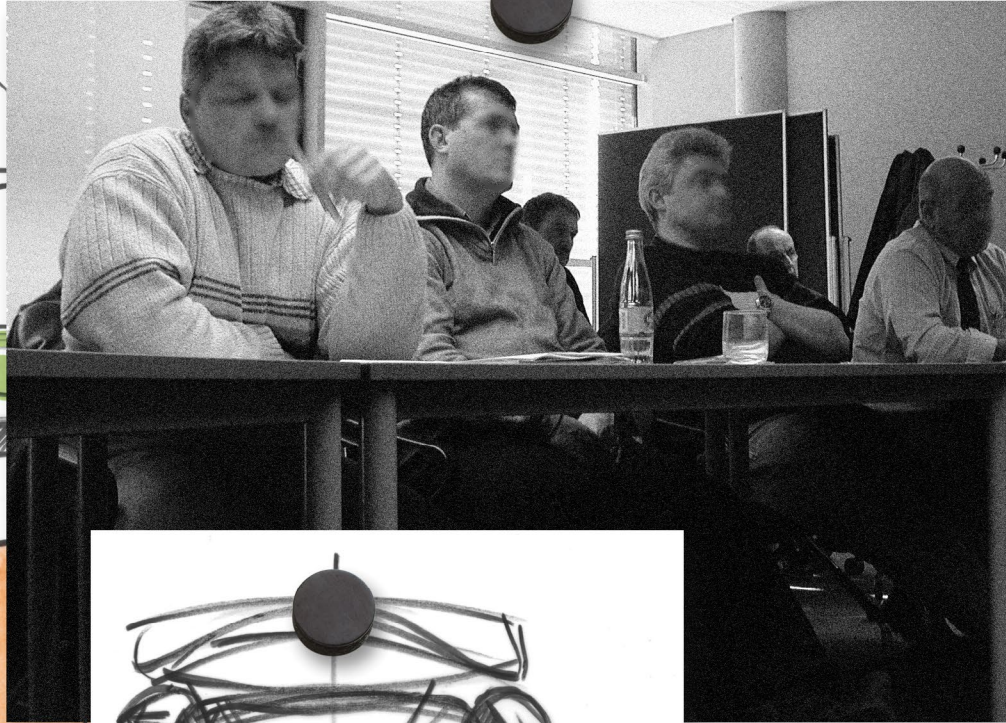
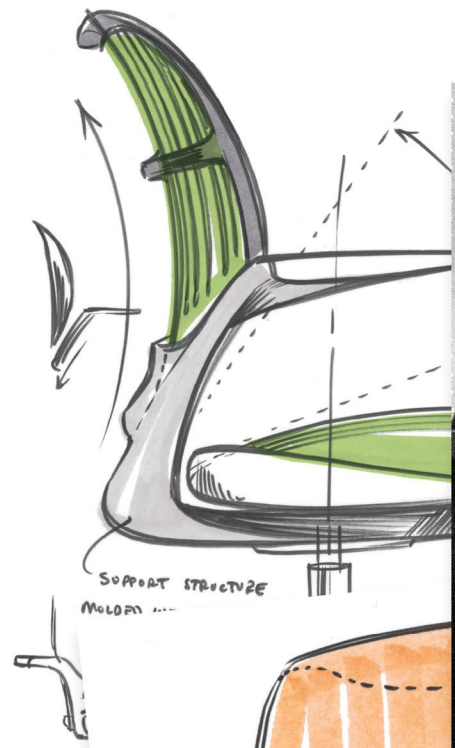


cobi collaborative seating



# Steelcase





### Comfortable collaboration.

There's no such thing as a quick meeting. We spend more time collaborating today than ever before. Squirming, fatigue, and loss of focus are unavoidable. Let's face it. Working with others requires a completely different set of postures, and thus, a completely different kind of chair. One that helps keep you comfortable and focused in collaborative settings like conference and training rooms.

**Introducing cobī™, part of our new category of collaborative seating. The cobī chair was designed specifically to foster collaboration and was based on three observations that generated our key insights:**

1. Chairs should promote movement and be comfortable for long periods of time.
2. Adjustments should be automatic and intuitive.
3. Chairs should support multiple postures.

### 3 Key observations

1. Collaboration takes time.
2. People don't adjust their chairs while collaborating.
3. People change postures when collaborating.







### Everything flexes.

Every part of **cobi** was designed to flex and adjust to your body. The chair's **top flexing edge** lets you comfortably rest your arm on top of the chair—you know, like you've tried to do on every chair you've ever sat in. The **flexing seat** encourages you to move and shift, allowing you to sit centered or off to the sides. And the **flexing back** contours to support any posture your body needs at any given moment.







### Internet Usage and Population March 2008

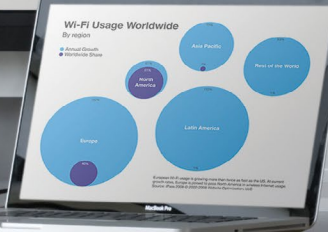
World Regions	Population (2008 Est.)	Population (% of World)	Internet Usage (2008 Est.)	% Population (Penetration)	Usage (% of World)
Africa	58,320,288	1.4%	51,000,400	8.8%	3.6%
Asia	3,770,181,243	55.0%	339,701,704	14.0%	37.9%
Europe	500,931,185	12.0%	382,005,271	47.7%	27.1%
Middle East	197,080,443	3.0%	41,939,200	21.3%	3.0%
North America	337,187,245	5.1%	246,402,574	73.1%	17.6%
Latin America	576,091,073	8.6%	137,300,309	23.8%	9.8%
Oceania	33,981,262	0.5%	19,353,462	57.0%	1.4%
WORLD TOTAL	6,678,120,288	100%	1,467,734,891	21.9%	100%

NOTES: (1) Internet Usage and World Population Statistics are for March 2008. (2) CLICK on each world region name for detailed regional content information. (3) Demographic (Population) numbers are based on data from the US Census Bureau. (4) Internet usage information comes from data published by Networld/Digitopia, by the International Telecommunications Union, by Intel IAC, and other reliable sources. (5) For definitions, abbreviations, and navigation help, please refer to the Data Surfing Guide, available on this webpage. (6) Information in this site may be checked, giving the due credit to: www.internetdata.com. Copyright © 2001 - 2008, Minnesota Marketing.

### Wi-Fi Usage Worldwide By region



EXAMPLE: Wi-Fi usage is growing more than twice as fast as the US. All current growth rates are based on data that is available to current internet usage.





### Automatic comfort.

Do you ever adjust your chair in conference rooms? Research says you don't. Maybe up or down, but chances are you sit down, and move into the first item of discussion on the meeting agenda.

The cobī chair offers **one manual adjustment** (seat height). The rest is taken care of for you. The **weight-activated mechanism** naturally puts you in the best position of comfort right from the start. When you first sit in cobī, it senses your center of gravity and adjusts to the position that will put the least amount of stress on your body, while still keeping you properly oriented and supported. When you shift or move, cobī does the same; allowing you to daydream in comfort.





Statement of Line



Chair: Arms  
Frame: **Black** 6205



Chair: Armless  
**Near Black** 6295



Chair: Arms  
**Platinum** 6249



Chair: Armless  
**White** 6009

Upholstery options



Standard Upholstery  
**Back:** Connect 3D Knit  
**Seat:** Cogent™: Connect



Sewn Upholstery  
Available on seat only.



Whether you design them, manage them or work in them, we can help you create high performance, sustainable work environments. We study how work gets done and how great spaces can help. Those insights are embedded into every product and service we offer. Our interior architecture, furniture and technology solutions help organizations build their business, reflect their brand and support their culture.

We're unique from everyone else in our industry, in that we offer products and services founded in a research methodology that focuses on the user, and how they really work.

We are committed to maintaining our leadership role in terms of sustainable responsibility, and we are equally committed to the customers and designers that we work with. Our job is to make your job easier. **Our passion is helping you Love How You Work.®**

Global Dealer Network

With a network of over 800 experienced dealers, we can help you create high performance, sustainable workspaces, anywhere in the world. Our network offers you local expertise with global reach. Whether your project is across town, across the country, or across the ocean, our dealer network will coordinate the logistics so you don't have to. It's local expertise with a global reach.

Steelcase and Dealer Services

Our extensive range of services can help you through all of the phases that a high performance environment evolves through: Measure. Explore. Plan. Provide. Manage.

**Measure**—helping you know if your workplace is keeping pace.

**Explore**—helping you link your business goals with the best workplace strategy.

**Plan**—helping you find a solution for that addresses your needs.

**Provide**—helping you every step of the way, from project management to move management.

**Manage**—helping you maintain an effective space for today and tomorrow.

Warranty

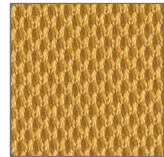
Steelcase and your Steelcase Dealer are totally committed to providing you a great experience and great products. We back that up with one of the industry's best warranties and problem resolution process that ensure that any problems that arise get addressed quickly.

Cogent: Connect Color options

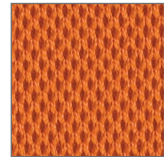
Color swatches shown may vary from actual colors. Please use actual surface material samples when specifying colors.



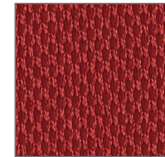
Coconut 5S15



Turmeric 5S16



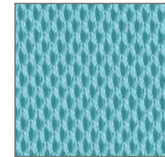
Tangerine 5S17



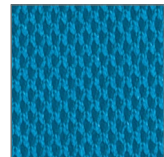
Scarlet 5S18



Concord 5S19



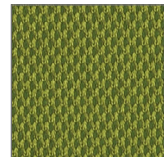
Maya Blue 5020



Blue Jay 5S21



Basil 5S22



Wasabi 5S23



Nickel 5S24



Graphite 5S25



Licorice 5026



Malt 5S27



Root Beer 5S28

Connect 3D Knit



Color match available for all Cogent: Connect color options

Dimensions and range of adjustability:

Seat Depth	19"
Seat Width	18.75"
Seat Height from Floor	15.5" to 20.5"
Back Height from Seat	19.5"
Width between Arms	19"
Arm Height from Seat	9"
Stool Height	40" to 50"

The cobī chair was designed by the Steelcase Design Studio in collaboration with Luke Pearson of PearsonLloyd.



As part of our commitment to sustainability, this brochure was created using an on-demand printing process, enabling us to digitally print materials only when necessary.

For high resolution images of these products and more, contact your local workplace consultant or dealer representative.

Contact Us:

Test  
122 Main Street  
AnytownUSA OH 44483455  
345



The cobī chair has **Indoor Advantage certification** from Scientific Certification Systems as being a low emitting product. **Cradle to Cradle™** Certification requirements are in process.

When your cobī chair is no longer useful to you, the **Steelcase Environmental Partnership** program will help you responsibly take it to the next phase in its Life Cycle—be it resale, refurbishing, charitable donation or recycling.

Visit [steelcase.com](http://steelcase.com) for complete information regarding recyclable content and Life Cycle Assessment.

**Love how you work.®**

**Steelcase®**

Call 800.333.9939 or visit [steelcase.com](http://steelcase.com)

Item #: 09-000049 1/09 ©2009 Steelcase Inc. All rights reserved. All specifications subject to change without notice. Printed in U.S.A. *cobi* is the one thing in your meetings that will actually do what you ask it to.